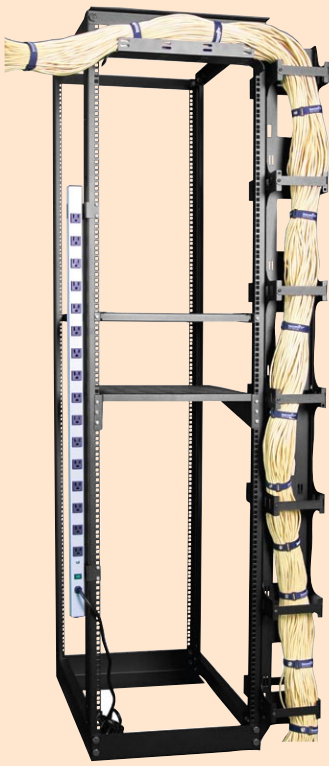


Four Post Racks



SHIPPING WEIGHT: 97 lbs. (3 packages)

DIMENSIONS: 84.00"H x 20.6"W x 29.00"D 42 RMU
 Weight Capacity: 1000 lbs.
 Networked: 1250 lbs.

CONSTRUCTION: Extruded Aluminum and
 12 Gauge Cold Rolled Steel (CRS)
 19" EIA 310-D Compliant Mtg.

FINISH: Black Powder Coat or Black Anodized



UL60950-1 Standard for IT & Communications Equipment, Cabinet Enclosures, and Rack Systems

Photo shows universal (M6) mounting
 Also available with #12-24 threaded mounting
 Accessories sold separately

DESCRIPTION

Four post rack with #12-24 threaded mounting (Bag of 50 #12-24 screws provided), black anodized aluminum uprights, and 12 gauge bracket set. Shipping weight 97 lbs. (3 packages)

PART NO.	RAIL DEPTH
4P1224-24	24" deep
4P1224-29	29" deep
4P1224-32	32" deep
4P1224-36	36" deep

DESCRIPTION

Four post rack with Universal mounting (M6 cage nuts and screws provided - qty. 50 each) 12 gauge cold rolled steel (painted black with durable powder coat) Shipping weight 97 lbs. (3 packages)

PART NO.	RAIL DEPTH
4PM6-24	24" deep
4PM6-29	29" deep (Recommended for rack mount servers)
4PM6-32	32" deep
4PM6-36	36" deep

ACCESSORIES

PART NO.	DESCRIPTION
1984-VCM10	7'H x 10"D double-sided vertical cable mgt. with 6"W x 5"D cable runs
1984-VCM10C	One hinged cover for 1984-VCM10
7206-FR-AHD	Front & rear mount (adj.) – 22.25"D Wt. cap.: 200 lbs. (Recommended for 24"D four post rack)
7206-FR-A32HD	Front & rear mount, (adj.) – 32.00"D Wt. cap.: 300 lbs. (Recommended for 29", 32"D & 36"D four post rack)
7206-FRSL-ADHD	Front & rear mount sliding, (adj.) – 26.00"D Wt. cap.: 110 lbs. (Recommended for 29"D four post rack)
7206-PKB-MT	Pivoting keyboard tray with mouse tray
FMSBKT	Front mount (EIA equipment) support bracket universal kit
PSBGLRR	Power strip mounting bracket
7215-20ARTLP	20 amp, 16 position power strip w/circuit breaker, & twist lock 5-20P plug*
CM-07	Waterfall Cable Management trough

* Requires PSBGLRR

New

Great Lakes Quality in a Four Post Rack