

*RF Code Asset Manager is an enterprise application that provides real-time physical asset inventory and asset awareness. The software features a flexible data model that allows complete customization for managing all types of assets.*

## Features & Benefits

- ◆ **Web 2.0 Based User Interface**
- ◆ **Extendable Architecture**
- ◆ **Distributed Processing Model**
- ◆ **Fully Customizable Asset Database Schema**
- ◆ **Tag to Asset Association**
- ◆ **Asset Life Cycle Management**
- ◆ **Location and Condition Exception Alerting**
- ◆ **Scheduled and Ad Hoc Asset Reports**

Asset Manager combines powerful, yet easy-to-use tools for configuring locations and asset hierarchies, creating comprehensive views of how critical assets are deployed across departments, buildings, or entire organizations. All asset attributes, both current and historical, such as financial, physical location, and contractual information can be maintained in an SQL database, enabling complete asset lifecycle management. Inventory reports are available at the touch off a button, so users can proactively respond to audits, and automate their regulatory compliance efforts.

When deployed with RF Code's active RFID tags and readers, physical asset location is tracked in real-time to quickly locate and identify equipment for maintenance and service, avoiding costly downtime. Automated alerts and reports can be configured for immediate notification of asset location or condition changes, delivering cost- and time-saving benefits.

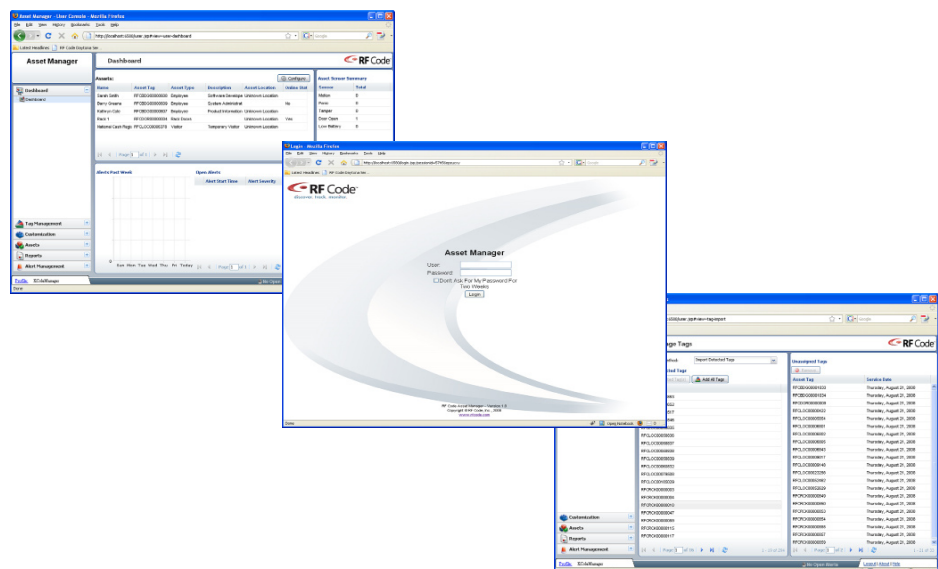
Asset Manager is licensed on a "per asset" basis. When an asset is added

to the database, an asset license is consumed. The asset continues to consume the asset license until the asset is deleted. Initial sizing and pricing is based upon the edition purchased:

- **Small Business:** includes 1,000 asset licenses
- **Standard Edition:** includes 4,000 asset licenses
- **Corporate Edition:** includes 20,000 asset licenses
- **Enterprise Edition:** includes 100,000 asset licenses

Asset Manager's browser-based Enterprise Console requires no software to be installed or maintained on user systems, and role-based user accounts make it easy for system administrators to control who can modify or view asset details.

Better than a spreadsheet, and more powerful than an ownership repository, RF Code Asset Manager software, combined with RF Code's active RFID hardware, provides an end-to-end solution for real-time asset tracking and visibility.



# RF Code Asset Manager Specifications

## ASSET MANAGER COMPONENTS

Both components of Asset Manager (Data Manager & Zone Manager) can run on a single server and this is the default installation. Additional Zone Managers can be installed on remote systems.

## OPERATING SYSTEM SUPPORT

Data Manager component	Windows Server 2003 (64 bit only), Windows Server 2008 (64 bit only)
Zone Manager component	RedHat Enterprise Linux version 5 (32 bit & 64 bit), Fedora Core Server version 7 (32 bit & 64 bit), Windows XP Server, Windows Server 2003 (32 bit & 64 bit), Windows Server 2008 (32 bit & 64 bit)

## ENTERPRISE CONSOLE WEB BROWSER SUPPORT

The Enterprise Console is supported for use with Firefox 3 and Internet Explorer 6 and 7 running on Windows XP or Vista.

## SQL DATABASE SUPPORT

PostgreSQL version 8.3 (and higher)	<ul style="list-style-type: none"> <li>Local on Linux</li> <li>Remote on Linux Server or Windows Server</li> </ul>
Microsoft SQL Server 2005	<ul style="list-style-type: none"> <li>Local or remote on a Windows Server.</li> <li>Not suitable for large-scale / production systems</li> </ul>
Microsoft SQL Express	<ul style="list-style-type: none"> <li>Local on Windows Server</li> <li>Remote on a Windows Server</li> </ul>

