



KVM-Over-IP Switch: KVM Control via Web Browser

Dominion KX Series

Enterprise-class KVM-over-IP switch with integrated local and secure multi-platform remote access

KX464

- 64 KVM ports
- 1 user at the rack
- 4 remote users over the network

KX432

- 32 KVM ports
- 1 user at the rack
- 4 remote users over the network

KX416

- 16 KVM ports
- 1 user at the rack
- 4 remote users over the network

KX232

- 32 KVM ports
- 1 user at the rack
- 2 remote users over the network

KX216

- 16 KVM ports
- 1 user at the rack
- 2 remote users over the network

KX132

- 32 KVM ports
- 1 user at the rack
- 1 remote user over the network

KX116

- 16 KVM ports
- 1 user at the rack
- 1 remote user over the network

KVM over IP when you need it most

Dominion KX is an enterprise-class, secure, KVM-over-IP ("digital") switch that provides two, three or five concurrent users with BIOS-level control of up to 64 servers and other IT devices from a single keyboard, monitor and mouse, achieving the industry's highest port density. It puts server control securely in the hands of authenticated users whether off-site, on-site or at the rack, without blocking remote users when accessed locally. Dominion KX also provides access through popular Web browsers, running on most major operating systems. With modem access, it provides emergency access to mission-critical servers, even when the network or the internet is unavailable.

A "plug-and-play," 1U or 2U appliance, Dominion KX is a completely self-contained system that installs in minutes. But it also contributes to single-view, enterprise-wide control when integrated with the CommandCenter® Secure Gateway centralized device management solution. The Dominion KX combines this flexibility with bulletproof security, integrated remote power control, and the highest quality video available.

Architecture

Dominion KX consists of two components: the KVM-over-IP switch and Computer Interface Modules (CIMs).

- ▶ Each CIM connects to the KVM ports of an individual server and converts the video signals for transmission of up to 150 feet over UTP (Cat5/5e/6) cabling. CIMs also deliver keep-alive keyboard/mouse emulation.
- ▶ The Dominion KX switch connects to each CIM and provides KVM-over-IP capabilities for remote access, plus simultaneous local access for controlling servers at the rack.
- ▶ Remote users easily access Dominion KX from Windows®, Linux®, Sun® or Mac® desktops via standard Web browser or standalone client via modem. Raritan's client software is automatically downloaded via browser; stand-alone versions of client software can be pre-installed for modem access.
- ▶ A true data center appliance, Dominion KX provides its entire feature set out-of-the-box: 128-bit encryption, remote power control, dual failover Ethernet, SNMP, Syslog, as well as integration with LDAP, Radius and Active Directory® authentication.

Flexible, convenient and reliable

- ▶ Anytime, anywhere access and control - obtain BIOS-level access and remote power control of any server in your data center(s) via Web browser.
- ▶ Convenient browser-based access (Internet Explorer®, Netscape®, Firefox and Mozilla™) eliminates the headache of installing and updating client software.

Combines Multi-Platform Access With Bulletproof Security

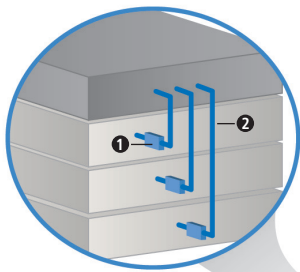
- Easy Installation - plug-and-play appliance, up and running in minutes
- Platform Independent - CIMs available for PS/2®, USB, Sun® and Sun USB
- Operates with select Paragon® CIMs
- Does not rely on any Windows® servers or IIS

Lowest costs and increases productivity

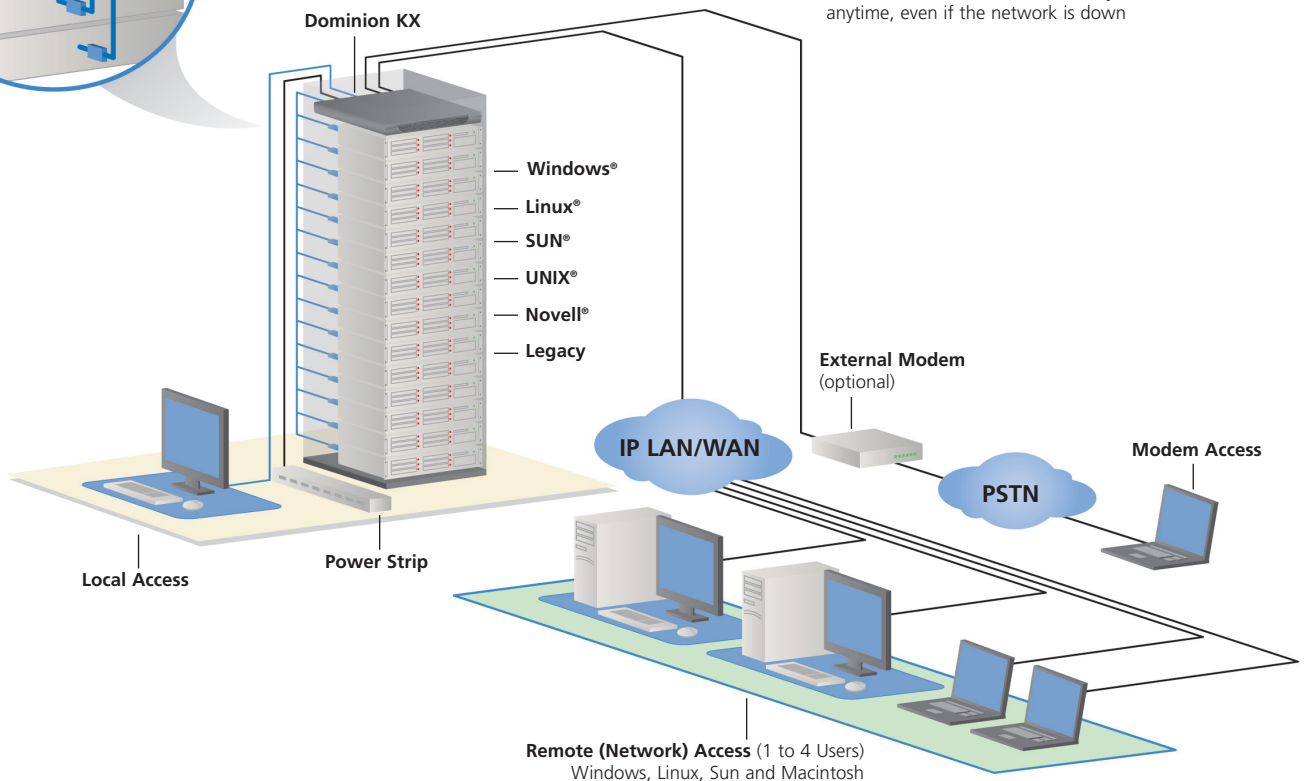
- Reduces expensive downtime by providing network-independent access in emergencies
- Minimizes expensive and inconvenient travel to remote locations
- Eliminates the need for multiple keyboards, monitors and mice, saving space and money
- Remotely controls power to servers with optional remote power strips

Secure

- Secure Linux-based appliance
- SSL 128-bit RSA public key, 128-bit private key encryption
- All data encrypted, including video transmissions
- Centralized authentication with LDAP, RADIUS or Active Directory support
- Configurable user and group permissions for server access and control
- Local and remote access logged and authenticated
- Uses configurable TCP port to preserve strict firewall settings
- Customized user security profiles



- 1 Computer Interface Module (CIM)
- 2 Cat5 Cable



In the diagram below, Dominion KX provides:

- Secure local access at the rack
- Secure remote IP-based network access from any location within or outside the data center
- Remote access via modem from any location at anytime, even if the network is down

Enables Higher Uptime and Improved Productivity

Easy to scale

- One Dominion KX device manages an entire rack or row of servers.
- Add, relocate and swap components without disruption as your data center grows.
- Deploy individually or integrate with any of Raritan's enterprise-wide data center solutions, including CommandCenter Secure Gateway.

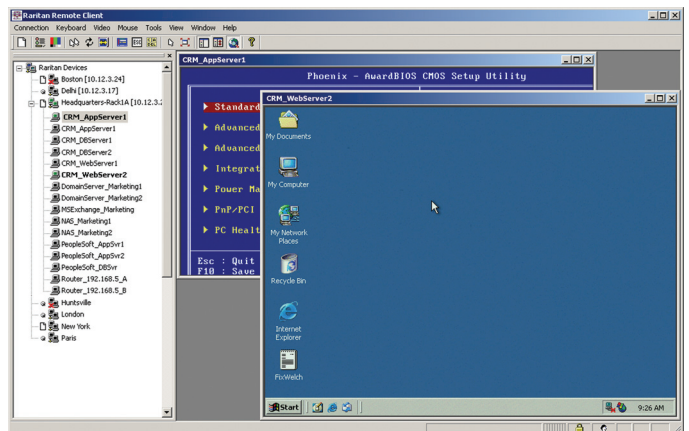
Features

- One, two or four KVM-over-IP channels
- 1U or 2U rack-mountable form factor
- Local user port for rack access (separate from IP channels)
- Highest port density in the industry – 64 ports
- Integrated power control
- UTP (Cat5/5e/6) cabling - up to 150 feet
- SNMP Management or Syslog logging
- Dual power with failover (KX464)
- Dual-failover Ethernet ports
- Plug-and-play installation
- Multi-platform CIMs for PS/2, USB and Sun devices
- Flash firmware upgrades
- Multi-user access and collaboration

Highest quality KVM over IP

- Intuitive Graphical User Interface (GUI)
- Award winning KVM-over-IP technology
- High quality video with low bandwidth utilization
- High (15-bit) color palette support

Anytime, Anywhere Access and Control



- Adaptive video settings for different bandwidth situations, including modem access
- Fastest, tightest 'mouse synchronization' in the industry

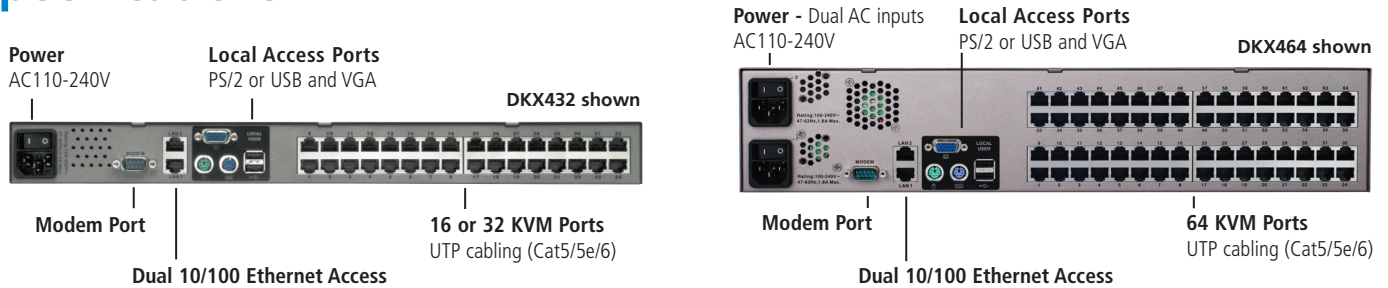
Virtual KVM Desktop

- Integrated, Web based access and control
- Multi-platform client supporting Windows, Linux, Sun and Mac clients
- Multi-browser access for IE, Firefox, Mozilla and Netscape
- Full screen video display
- Intelligent mouse synchronization
- Automatic color calibration
- Transparent keyboard handler
- Flexible video scaling

When you're ready to take control, do it with Dominion KX.

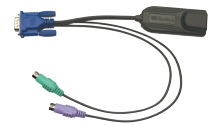
Raritan is a leading supplier of solutions for managing IT infrastructure equipment and the mission-critical applications and services that run on it. Raritan was founded in 1985, and since then has been making products that are used to control millions of servers at more than 50,000 network data centers, computer test labs and multi-workstation environments around the world. From the small business to the enterprise, Raritan's complete line of compatible and scalable KVM and remote connectivity products offers IT professionals the most reliable, flexible and secure in-band and out-of-band solutions to manage data center equipment applications and services, while improving operational productivity. More information on the company is available at Raritan.com.

Specifications



Dominion KX Model	Description	Dimensions - (WxDxH)	Weight	Power
DKX464	64 server ports, 4 remote users, 1 local port for use at the rack	17.3" x 11.4" x 3.5"; 439 x 290 x 90mm	13.73 lbs; 6.24kg	Dual Power 100V/240V 47/63Hz 1.8A
DKX432	32 server ports, 4 remote users, 1 local port for use at the rack	17.3" x 11.4" x 1.75"; 439 x 290 x 44mm	9.48 lbs; 4.3kg	100V/240V 50/60Hz 1A
DKX416	16 server ports, 4 remote users, 1 local port for use at the rack	17.3" x 11.4" x 1.75"; 439 x 290 x 44mm	9.04 lbs; 4.1kg	100V/240V 50/60Hz 1A
DKX232	32 server ports, 2 remote users, 1 local port for use at the rack	17.3" x 11.4" x 1.75"; 439 x 290 x 44mm	9.0 lbs; 4.1kg	100V/240V 50/60Hz 0.6A
DKX216	16 server ports, 2 remote users, 1 local port for use at the rack	17.3" x 11.4" x 1.75"; 439 x 290 x 44mm	8.65 lbs; 3.9kg	100V/240V 50/60Hz 0.6A
DKX132	32 server ports, 1 remote user, 1 local port for use at the rack	17.3" x 11.4" x 1.75"; 439 x 290 x 44mm	9.0 lbs; 4.1kg	100V/240V 50/60Hz 0.6A
DKX116	16 server ports, 1 remote user, 1 local port for use at the rack	17.3" x 11.4" x 1.75"; 439 x 290 x 44mm	8.65 lbs; 3.9kg	100V/240V 50/60Hz 0.6A

Specifications for all Dominion KX Models	
Form Factor	1U and 2U full width, rack mountable (brackets included)
Operating Temperature	0° - 40°C (32° - 104°F)
Humidity	20% - 85% RH
Remote Connection	Network: Dual Failover 10/100 Ethernet (RJ-45) Modem Port: DB9(F) DTE Protocols: TCP/IP, HTTP, HTTPS, UDP, RADIUS, SNTP, DHCP, PAP, CHAP
Local Access Port	Video: HD15(F) VGA Keyboard/Mouse: Mini-DIN6(F) PS/2 or USB A (F)
Screen Resolutions	PC text mode: 720x400 PC graphic mode: 640x480, 800x600, 1024x768, 1152x864, 1280x1024 Sun® video mode: 1024x768, 1152x900, 1280x1024



DCIM-PS2



DCIM-SUN



DCIM-USB

Computer Interface Modules (CIMs)			
CIM Model	Description	Dimensions - WxDxH	Weight
DCIM-PS2	CIM for PS/2	1.3" x 3.0" x 0.6"; 33 x 76 x 15mm	0.20lb; 0.09 kg
DCIM-SUN	CIM for SUN	1.3" x 3.0" x 0.6"; 33 x 76 x 15mm	0.20lb; 0.09 kg
DCIM-USB	CIM for USB	1.3" x 3.0" x 0.6"; 33 x 76 x 15mm	0.20lb; 0.09 kg
DCIM-SUSB	CIM for SUN USB	1.3" x 3.0" x 0.6"; 33 x 76 x 15mm	0.20lb; 0.09 kg

Warranty	Two Years with Advanced Replacement*
-----------------	--------------------------------------

© 2006 Raritan, Inc. All rights reserved. Raritan, Dominion CommandCenter and Paragon are registered trademarks of Raritan, Inc. in the United States and/or other countries. All others are trademarks of their respective owners.

*To qualify for advanced replacement under the standard warranty, you must register the product at http://Raritan.com/standard_warranty. Specifications are subject to change without notice.