

If you manage a datacenter,
we have a solution for you.

How do I...

Distribute and load balance 3-phase power?

Reboot remote servers and network devices?

Smart load shed power to the equipment in the cabinet?

Provide adequate power distribution for blade servers?

Monitor True RMS input current?

Execute an orderly shutdown?

Know when the cabinet temperature is too high?



Basic CDU®

Reliable Cabinet Power Distribution
with Branch Circuit Protection.

Metered CDU®

Reliable Cabinet Power Distribution with
Local Input Current Monitoring and Branch
Circuit Protection.

Smart CDU®

Reliable Cabinet Power Distribution with
Local Input Current Monitoring, Branch
Circuit Protection and Enhanced Remote
Power & Environmental Monitoring.

Switched™ CDU®

Flagship CDU with all of the features
of the Smart product line plus Remote
Management, including Reboot
Commands to connected servers
and network equipment.

CDU Product Family

Power Distribution Solutions for the Data Center Equipment Cabinet



The World Leader in Power Management Products & Solutions

Cabinet power distribution units and power monitoring and measurement solutions for data centers and telecommunications.

For over 25 years, Server Technology has been providing the world's biggest companies with trusted power management solutions. Solutions to improve uptime and energy efficiency while reducing carbon footprint and operating costs. Solutions that give you the critical information you need to run your operation better. Intelligent cabinet-level power distribution units (CDUs) that set the industry-standard for quality and functionality. Power monitoring, measurement and management solutions that give you the information needed to run your operation — better and smarter.

Certifications, Compliance & Warranty

All products contained within this brochure carry one or more of the certifications below. Additional agency certifications are available based on specific market requirements.

- > US & Canada (cTUVus Mark) to UL 60950-1: 2007 and CAN/CSA 22.2 No. 60950-1-07
- > US & Canada (cULus Mark) to UL 60950-1: 2007 and CAN/CSA 22.2 No. 60950-1-07
- > EMC to EN 55022 Class A, EN 55024, CISPR 22 Class A
- > European Union (TUVGS Mark) to EN 60950-1: 2006 + A11
- > FCC Class A, Part 15
- > CE Mark
- > 2 Year Warranty

Feature Key

Sentry CDU product lines feature two or more of the following assets:



Flexible Mounting Options

Zero-U button or bracket mounting for mounting vertical CDUs in the back or on the side of the cabinet to avoid consuming valuable "U" space.



Branch Circuit Protection

All Sentry CDUs meet the UL 60950-1 requirement for branch circuit protection and use either fuses or circuit breakers to protect each branch of outlets.



Input Current Monitoring

The CDUs exclusive True RMS Current Monitoring is critical to preventing overloads in high-density computing environments. Digital LED displays on the CDU enclosure report the input current of each phase or branch circuit.



Environmental Monitoring

External probes, with 3-meter cable, capable of measuring temperature & humidity. Receive SNMP-based or email alerts when conditions exceed defined thresholds.



Expansion Module

Our exclusive method for linking additional outlets, on separate CDUs, together under a single IP address, and provides support for A & B power in-feeds.



IP Access, Security & Communications

Web interface, SSL, SSH, Telnet, SNMP & RS-232 access, 10/100 Base T-Ethernet, SSLv3/TLSv1, SNMPv2, TACACS+, LDAP, LDAPS, RADIUS, DHCP, SMTP/Email, & Syslog.



Individual Outlet Control

Control individual outlets or groups of outlets with ON, OFF, and Reboot functionality to remotely reboot unresponsive servers and network equipment.



POPS™ (Per Outlet Power Sensing)

Monitor Current Load (A), Voltage (V), Power (W), Apparent Power (VA), Crest Factor and Power Factor per outlet.



PIPS™ (Per Inlet Power Sensing)

Monitor Current Load (A), Voltage (V), Power (W), Apparent Power (VA), Crest Factor, Reactance, Accumulated Energy (kWh), and Power Factor per inlet.



Cable Retention Clip

Ensures power cords to the connected devices are not accidentally unplugged or disconnected.

CDU Product Family

Sentry CDU Family Delivers Power Solutions for any Data Center



Basic CDU®

Cabinet Power Distribution with Branch Circuit Protection

The Sentry Basic CDU products provide reliable power distribution for all the devices in the equipment cabinet, from 2kW-6kW per cabinet. Available in single-phase 110-120V or 208-240V power distribution with 20A or 30A options and 3-phase 208-240V power distribution with 20A, 30A, 50A or 60A options.



Metered CDU®

Cabinet Power Distribution with Branch Circuit Protection, and Local Input Current Monitoring

The Sentry Metered CDU products provide reliable power distribution for all devices in the equipment cabinet, from 2kW-22kW per cabinet. Available in single-phase 110-120V or 208-240V or 3-Phase 208-240V power distribution with 20A, 30A, 50A or 60A options. Local input current monitoring allows the installation engineer to verify the aggregate load on the circuit or phase.



Smart CDU®

Cabinet Power Distribution with Branch Circuit Protection, expanded functionality of SNMP-based Input Current Monitoring and Environmental Monitoring

The Smart CDU products provide reliable power distribution coupled with remote power & environmental monitoring. Use the network interface to view power, temperature and humidity levels via Web browser, or SNMP-based and email alerts when conditions exceed defined thresholds.



Switched™ CDU®

Cabinet Power Distribution with Branch Circuit Protection, expanded functionality of SNMP-based Input Current Monitoring and Environmental Monitoring, and more...

The Switched CDU products provide the capability to securely monitor and control cabinet power remotely for a data center or remote branch office. The Switched CDU's combine remote configuration and management with power distribution and power and environmental monitoring. Reboot a single or dual power server with one command. Receive SNMP-based or email alerts when power or environmental conditions exceed thresholds. Assign access rights to user groups or individuals. Switched CDU products provide the flexibility needed for all data centers and remote sites, including power requirements for high-amperage and high-voltage, UL 60950-1 Branch Circuit Protection, and SNMP traps and email alerts including current monitoring.



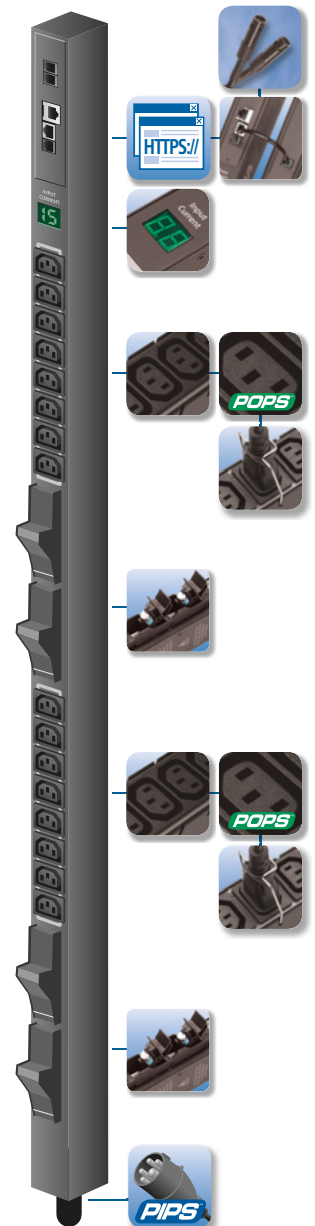
Smart & Switched CDU® with PIPs™

Per Inlet Power Sensing (PIPs) is available on select CDUs. See Page-4 for more information.



Smart & Switched CDU® with POPS™

Per Outlet Power Sensing (POPS) is available on select CDUs. See Page-5 for more information.



Smart & Switched CDU with PIPS

Per Inlet Power Sensing CDUs



PIPS Smart & Switched CDU

Introducing the best infeed power measurement technology on the market for data center rack-level power monitoring. PIPS technology replaces power monitoring at the RPP (Remote Power Panel) in data centers with higher accuracy and lower cost monitoring of each power circuit attached to a CDU. This new product feature also replaces the already accurate Digital True RMS feature currently available on intelligent Smart, Switched and POPS CDUs by bringing more types of power measurements from the power infeed to the built in graphic user interface (GUI). Expect the same quality and functionality on current intelligent CDUs, but with an increased level of information to help you make the critical decisions regarding your facility.

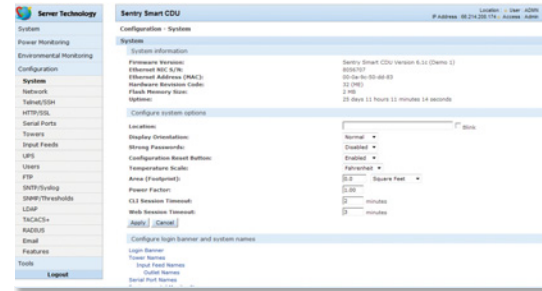
PIPS Features

Sentry PIPS works in conjunction with all of the features of a Smart, Switched or POPS CDU with the ability to provide power monitoring per inlet/infeed. Power information per infeed includes current, voltage, power, apparent power, crest factor, reactance, power factor and accumulated energy. The PIPS CDU is capable of being accessed through either a secure network or serial connection. The secure integral web interface provides a simple and easy way to monitor the CDU. Configuration choices include: SNMP traps, email alerts, grouping, and all security and communication settings. Research shows that measuring at the infeed level is the most accurate place to measure power and is recommended by the Green Grid.

Communication Tools

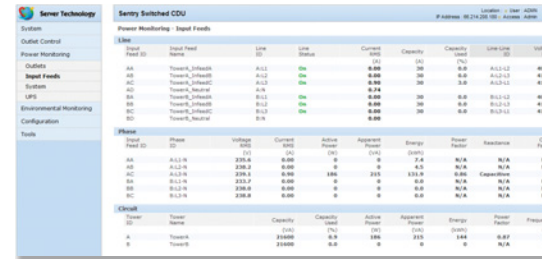
- > Web Interface
- > SNMP & RS-232 access
- > 10/100 Base T-Ethernet
- > SMTP/Email
- > Telnet
- > SSL & SSH
- > SSLv3/TLSv1
- > SNMPv2 & v3
- > TACACS+
- > LDAP
- > LDAPS
- > RADIUS
- > DHCP
- > Syslog
- > IPv6

Power Information & Management Internal Web Interface



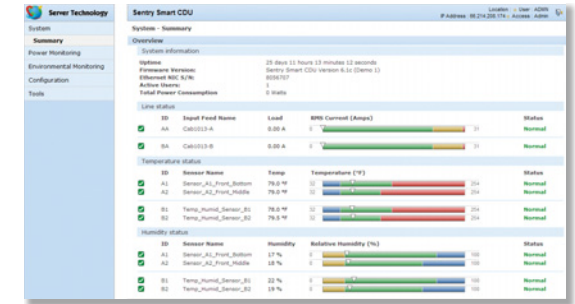
System Configuration

Intelligent CDUs enable network access to remotely configure access, outlets, alarms, thresholds, and more.



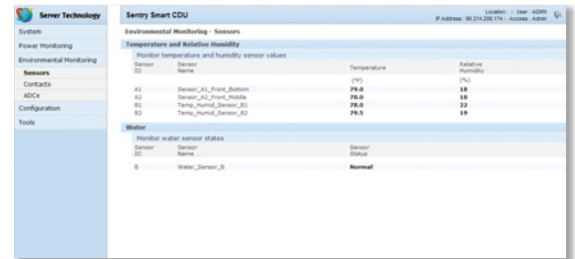
Sentry PIPS (Per Inlet/Infeed Power Information)

- > Current (Amps)
- > Power (Watts)
- > Power Factor
- > Neutral Current: Measures neutral current
- > Voltage (Volts)
- > Apparent Power (VA)
- > Accumulated Energy (kWh)



Easy to Read Summary Screen

The new summary screen allows users to quickly confirm the status of the rack power & environmental conditions.



Environmental Monitoring

No additional IP address needed to obtain temperature and humidity readings. A pair of probes (EMTH-1-1) can be added to any intelligent master CDU (Smart or Switched). Additional probes can be added using an EMCU-1-1B (page 9).

POPS Switched CDU

Per Outlet Power Sensing CDUs

POPS Switched CDU Integral Web Interface

Blade servers and high density computing power requirements continue to increase and POPS is the right CDU for that environment. With device-level output control, you can monitor, track and manage servers, IT equipment and the equipment cabinet infrastructure. With the ability to measure, monitor, and report power down to the rack or outlet level, this solution follows the Green Grid's recommendations for acquiring the most accurate power monitoring data.

POPS Features

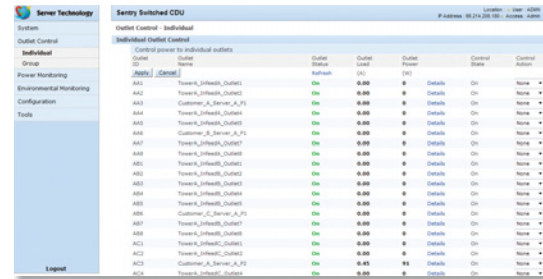
- > Simple, secure, integral web interface GUI configuration tool
- > Temperature and Humidity Support
- > Authentication logging, configuration changes and system events
- > Secure Syslog protocol support
- > Email notifications of log, event, authorization, power and configuration messages
- > Automatic Firmware Updates via FTP server
- > Strong Password Support and Pre-Login Banner
- > Ability to Ping an IP address to see if the device is responding
- > Grouping of outlets across Master & Expansion CDUs
- > SNMP: Traps based on Status, Changes, Load, Temperature and Humidity
- > Supports 104 user accounts and 18 simultaneous logins with a dedicated SNMP connection

Communication Tools

- > Web Interface
- > SNMP & RS-232 access
- > 10/100 Base T-Ethernet
- > SMTP/Email
- > Telnet
- > SSL & SSH
- > SSLv3/TLSv1
- > SNMPv2 & v3
- > TACACS+
- > LDAP
- > LDAPS
- > RADIUS
- > DHCP
- > Syslog
- > IPv6

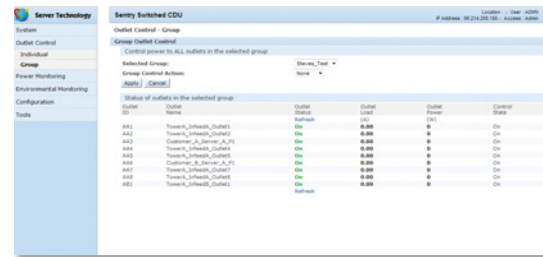
*Requires Sentry Power Manager (SPM)

Power Information & Management Internal Web Interface



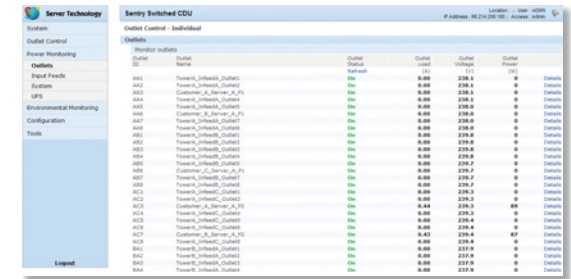
Outlet Control Power Monitoring

- > Individual Outlet Control
- > Current Load Monitoring
- > Power Monitoring
- > Additional Details



Grouped Outlets Power Information*

- > Cabinet (single IP address using master/expansion configuration for two CDUs)*
- > Device (Multiple Outlets)*
- > Group of Devices (Application)*
- > Individual CDU



Per CDU Power Information

- > Current Load
- > Infeed Voltage (VAC)
- > Input Feed Watts (W)
- > System Total Watts (W)
- > System Footprint (SqFt / SqM)
- > System Watts (W/SqFt / W/SqM)



Sentry POPS™ (Per Outlet Power Sensing)

- > Current Load (A)
- > Voltage (V)
- > Power (W)
- > Apparent Power (VA)
- > Crest Factor
- > Power Factor

For more on POPS CDUs, please see the POPS Smart & Switched CDU brochure or visit www.servertech.com

CDU Product Family

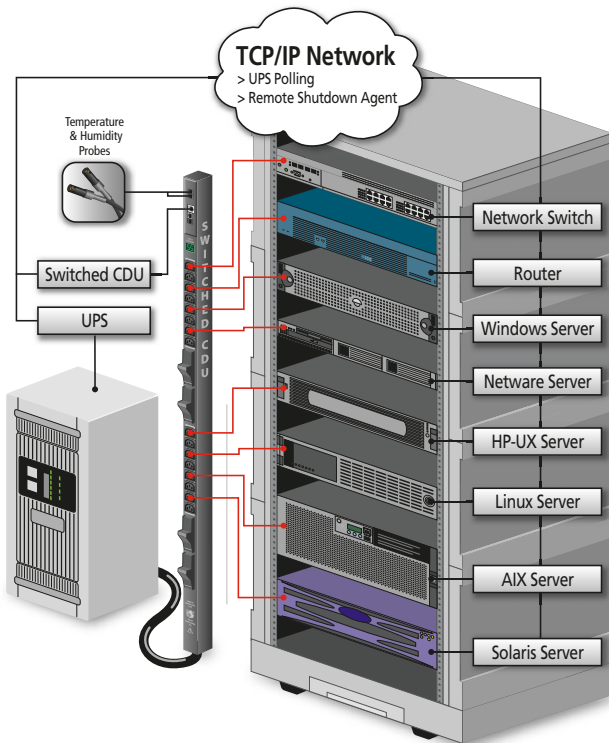
Secure Remote Administration Interface and Smart Load Shedding



Sentry Smart Load Shedding

Load Management based on Temperature, In-feed Load, and UPS Status

Server Technology is the first to offer datacenter managers the ability to automatically manage Switched CDU power outlets based on key operating parameters, including temperature, in-feed load, and UPS power status. Each outlet may be controlled by one or more of these parameters. Should the temperature or load current exceed defined thresholds or the UPS lose power and go onto battery, all or a portion of the loads may be automatically shed to ensure longer operational life of your critical devices.

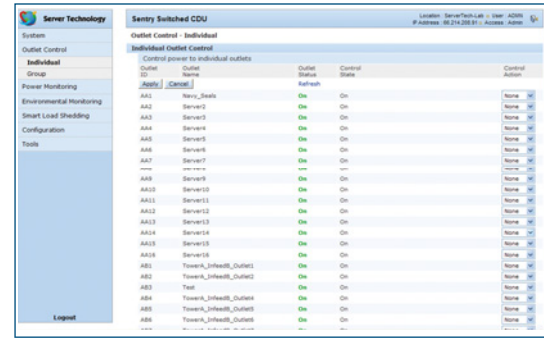


Features

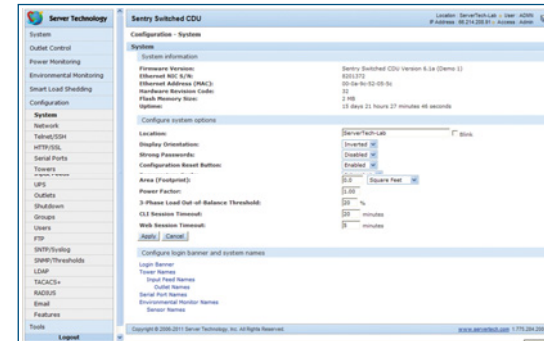
- > Easy to use, integral, web based GUI configuration tool
- > "Auto-recovery" with a reboot delay time when conditions return to normal
- > Each CDU outlet is assigned the IP address of the connected device for shut down notification
- > Remote shutdown agent for server shut down
- > SNMP trap notifications
- > Load shedding event notifications via SNMP traps or Email alerts

Sentry Access, Security & Communication

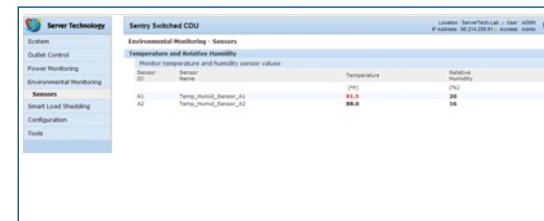
Secure Remote Administration Interface



Web Based GUI: Individual Outlet Control Screen



Web Based GUI: System Configuration Screen



Web Based GUI: Environmental Monitoring Screen

Features

- > Secure, web based GUI configuration tool
- > Temperature Support (Celsius/Fahrenheit) and Humidity (%)
- > Logs authentications, configuration changes and system events
- > SNMP and email notifications for multiple users of log, event, power, and authorization, configuration messages
- > SYSLOG logging protocol support
- > Automatic Firmware Updates via FTP
- > Strong Password Support and Pre-Login Banner

Power Information

- > Input Feed Voltage (VAC)
- > Input Feed Watts (W)
- > System Total Watts (W)
- > System Footprint (SqFt / SqM)
- > System Watts/Area (W/SqFt / W/SqM)

Communication Tools

- > Web interface, SSL, SSH, Telnet, SNMPv2/v3 & RS-232 access, 10/100 Base T-Ethernet, SSLv3/TLSv1, SNMPv2, TACACS+, LDAP, LDAPS, RADIUS, DHCP, SMTP/Email, IPv6, and Syslog.

CDU Product Family

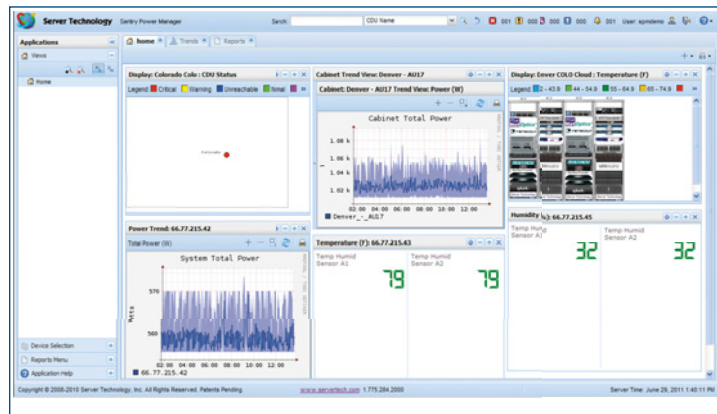
Power Manager and Expansion Modules



Sentry Power Manager

Manage Multiple CDUs Across Multiple Locations

Do you have multiple Sentry CDUs in one or more locations that you would like to access from one central point? Would you like one central location where all alarms can be viewed and logged for reporting, e-mail or SNMP trap notifications? No problem! Our Sentry Power Manager (SPM) product is capable of monitoring and managing multiple Sentry devices in IP-based enterprise networks. SPM provides a global view of all Sentry CDUs with the ability to view devices based on their temperature, humidity, current and device status. Besides managing and monitoring all alarm conditions, this information can also be used to provide reporting and trending information for display within SPM or integrated with your existing Building Management System (BMS).



Web Based GUI: Quickly drill down from a global view to the rack level. Users can setup custom network operation center (NOC) views for whatever they want to display — from global dashboard views down to each CDU, cabinet or location.

Event Notification

- > Email notification via the CDU to multiple recipients when an event occurs
- > SNMP traps via the CDU when an event occurs
- > Auto-discovers each CDU for easy configuration
- > Easily create a user interface that mirrors the physical deployment of the data center
- > Quickly drill down from a global perspective to the rack's actual physical location if there is a problem (quickly identify the alarm and the physical location of the CDU)
- > Create outlet clusters to group outlets within a CDU, across linked CDUs or across enterprise locations

Multiple Reporting Options

- > Reporting capabilities to produce reports on critical management parameters such as temperature, humidity and current load
- > Reports on Current and Power providing the power consumption of each input, total for the rack and/or per square foot of the rack

On-Demand Accessibility

- > Real-time view of all active system alarms
- > Anytime, anywhere web-based views
- > Manage thousands of CDUs from a single console

Compatibility

- > Server Technology Sentry CDUs with firmware 5.3+

Web Browsers Supported

- > Microsoft Internet Explorer 7.0+
- > Mozilla Firefox 2.0+

Linkable Expansion Module

The Expansion Module CDU, Smart CL or Switched CX, is our exclusive method for linking together outlets on different power circuits.

The Expansion Module CDU, CL or CX, increases the number of managed outlets on a single IP address. Each expansion module links to its parent Smart CS or Switched CW, which contains both network and serial interfaces. When linked to a Smart or Switched CDU, the CL's or CX's outlets are auto-discovered by the Smart or Switched CDUs firmware, and all available outlets are viewable through the firmware.

On the Switched CW, outlets are individually controllable, or groups of outlets can be controlled between the Switched CW and CX with one command. Each Expansion Module CDU can be a single or dual-power feed and a Zero-U or horizontal enclosure.

A-Feed (CS/CW) B-Feed (CL/CX)



Smart & Switched CDU

Power Management Architecture



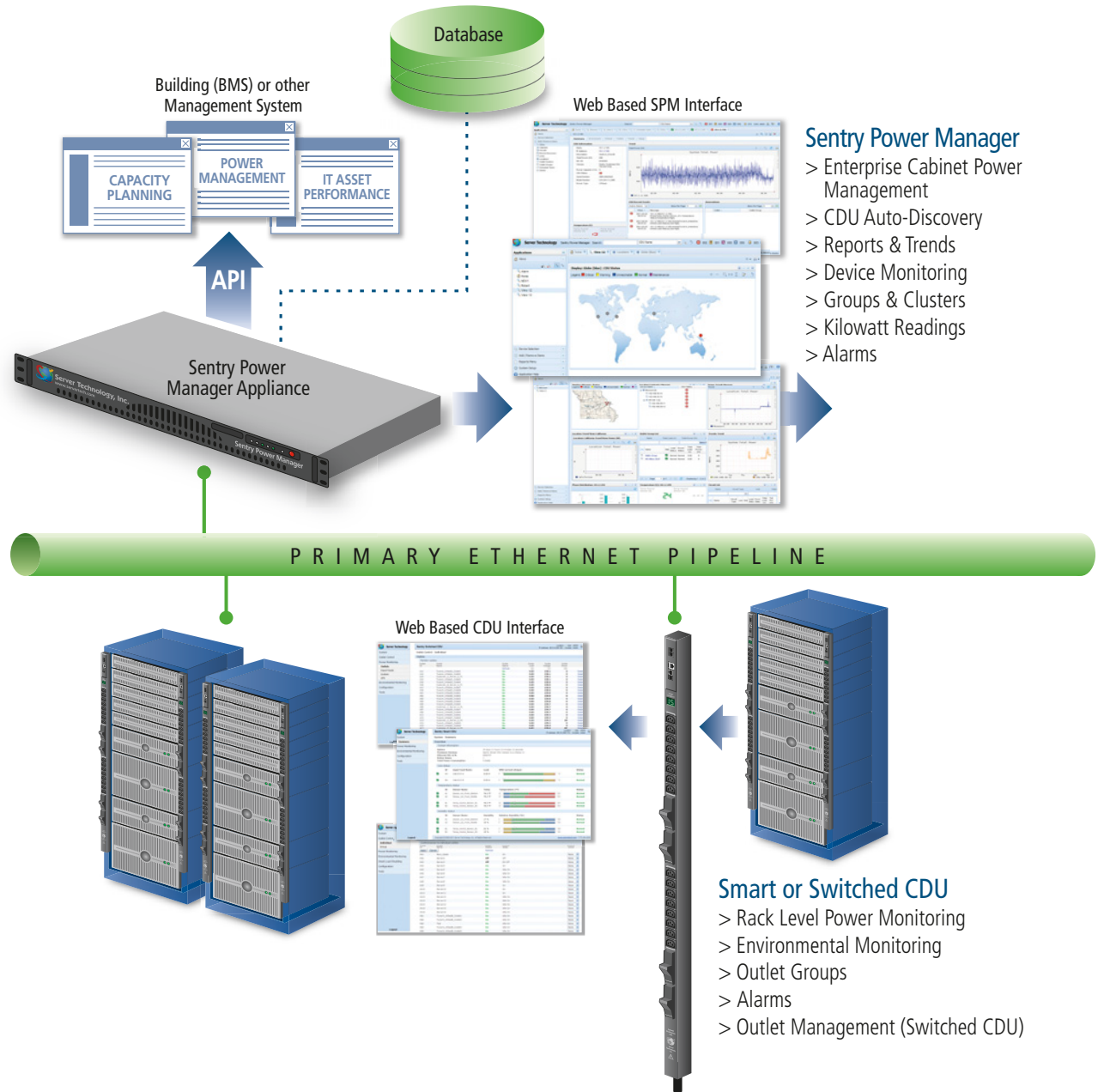
Power Information & Management

Sentry Power Manager

The Sentry Smart and Switched CDUs are capable of being monitored through the SPM (Sentry Power Manager) tool. Sentry intelligent CDUs, in conjunction with SPM, provide additional power information for consumption purposes and power monitoring as well as trending and power reports. An API allows power and other information to be communicated to a Building Management System (BMS) or other systems.

Sentry Power Manager (SPM) Solutions

- > SPM provides a global view of all Sentry CDUs with the ability to view devices based on their temperature, humidity, current & device status. Quickly drill down from global view to your facility maps to an individual CDU.
- > Manage and monitor all user-defined alarm conditions on your entire network.
- > Group and cluster outlets for remote reboot, power measurement information across a single CDU, a linked CDU, or across the entire network.
- > Allows measurement of power consumption and capacity planning.
- > Auto-discover all your CDUs connected to your IP network.
- > View Logs for user access, discovery, user actions, and alarms.
- > Multiple user levels and permissions including support for LDAP.
- > Control individual outlets on Switched CDUs
- > SPM v5.1+ is vmware ready
- > Optional appliance or virtual version



Sentry Power Manager

- > Enterprise Cabinet Power Management
- > CDU Auto-Discovery
- > Reports & Trends
- > Device Monitoring
- > Groups & Clusters
- > Kilowatt Readings
- > Alarms

Smart or Switched CDU

- > Rack Level Power Monitoring
- > Environmental Monitoring
- > Outlet Groups
- > Alarms
- > Outlet Management (Switched CDU)

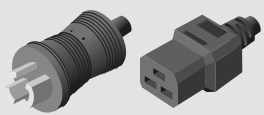
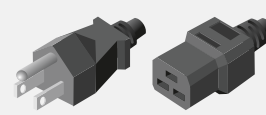
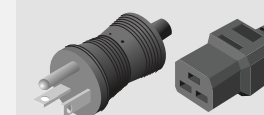

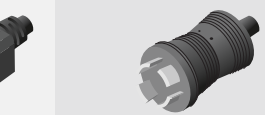

CDU Power Cords

Plug and Cord Options for Sentry CDUs

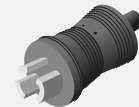

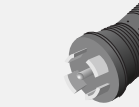



Server Technology provides 20A, 30A, and 60A products with a variety of input cord options available. Please refer to the Power Cords and cordset options below for different configurations. Shown below are standard power cord and cordset options.^{1 2}

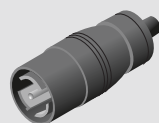


20A Plugs & Cords

Model	PTCORD-1	PTCORD-5	PTCORD-6	PTCORD-7	Hard-Wired	Hard-Wired
Outlets	NEMA L6-20P to IEC 60320/C19	NEMA 5-15P to IEC 60320/C19	NEMA 5-20P to IEC 60320/C19	NEMA L5-20P to IEC 60320/C19	NEMA L15-20P	NEMA L21-20P
Voltage (V)	208-240V	100-120V	100-120V	100-120V	3-Phase 208V, Delta	3-Phase 208V, Wye
Amps (A)	20A	15A	20A	20A	20A	20A
Length	10' 3m	10' 3m	10' 3m	10' 3m	10' 3m	10' 3m
						



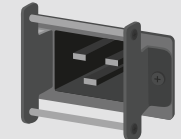
30A Plugs & Cords

Model	Hard-Wired	Hard-Wired	Hard-Wired	Hard-Wired	Hard-Wired
Outlets	NEMA L5-30P	NEMA L6-30P	NEMA L15-30P	NEMA L21-30P	NEMA L22-30P
Voltage (V)	100-120V	208-240V	3-Phase 208V, Delta	3-Phase 208V, Wye	277/480V, Wye
Amps (A)	30A	30A	30A	30A	30A
Length	10' 3m	10' 3m	10' 3m	10' 3m	10' 3m
					

50A & 60A Plugs & Cords

Model	Hard-Wired	Hard-Wired	Hard-Wired
Outlets	CS8365C	IEC 60309 (4pin, 9hr)	IEC 60309 (5pin, 9hr)
Voltage (V)	3-Phase 208-240V, Delta	3-Phase 208-240V, Delta	3-Phase 208V, Wye
Amps (A)	50A	60A	60A
Length	Varies Based on Model	Varies Based on Model	Varies Based on Model
			

Accessory Options

Model	EMTH-1-1	EMCU-1-1B	C20 Inlet Bracket
Description	Temp & Humidity Probes	Environmental Monitoring Control Unit	C20 Inlet Retention Bracket
Function	Measures cabinet temperature & humidity	Supports 2 additional EMTH-1-1, water & 4 dry contact closure door sensors	Securely fastens C20 cord to chassis
Length	3m	—	—
			

¹Server Technology offers a wide range of products for North America and global markets. For more information on global products visit our website at www.servertech.com ²Custom cable lengths available; contact a Server Technology Power Expert to determine the correct solution.

Basic CDU

Zero-U Vertical Enclosures



Model	CB-12H1	CB-12H1	CB-12H2	CB-12H2	CB-24V1
Outlets	(12) 5-20R	(12) 5-20R	(12) C13	(12) C13	(24) 5-20R
Input Voltage (V)	100-120V	100-120V	208-240V	208-240V	100-120V
Amps (A)	20A	30A	20A	30A	20A
Cabinet kW	2.4kW	3.6kW	4.2kW	6.2kW	2.4kW
Output Voltage (V)	100-120V	100-120V	208-240V	208-240V	100-120V
Dimensions	10U 17" 432mm	10U 17" 432mm	10U 17" 432mm	10U 17" 432mm	18U 31.5" 800mm



Basic CDU

Zero-U Vertical Enclosures



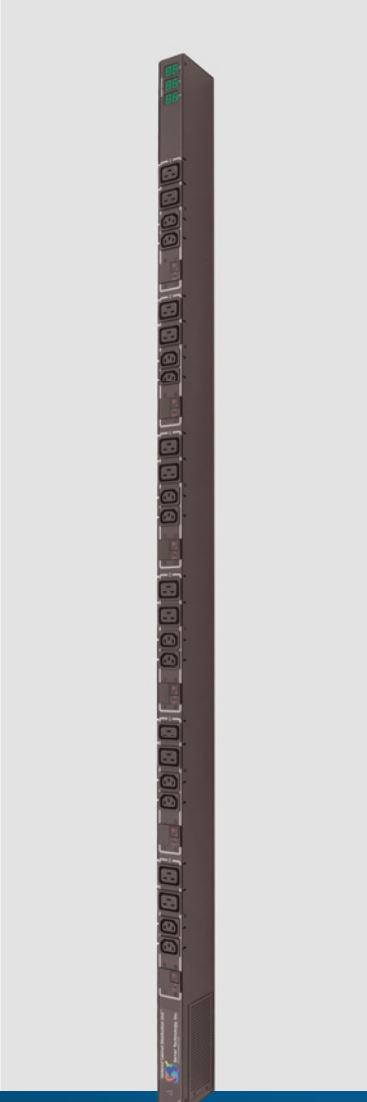
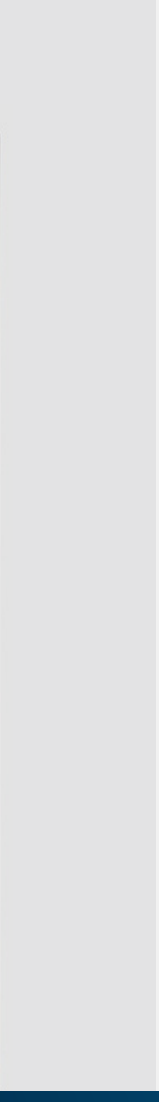
CB-24V1	CB-24V2	CB-24V2	CB-24V2A/C	CB-24VD / Y	CB-24VD / Y-A9 (50/60A)
(24) 5-20R	(24) C13	(24) C13	(24) C13	(24) C13	(12) C13 + (12) C19
100-120V	208-240V	208-240V	208-240V	3-Phase 208-240V	3-Phase 208-240V
30A	20A	30A	20 or 30A	20A or 30A	50A or 60A
3.6kW	4.2kW	6.2kW	4.2 or 6.2kW	7.2kW or 10.8kW	18kW or 21.6kW
100-120V	208-240V	208-240V	208-240V	208-240V	208-240V
18U 31.5" 800mm	18U 31.5" 800mm	18U 31.5" 800mm	20U 34" 862mm	29U 50" 1270mm	38U 65" 1651mm



Metered CDU

Zero-U Vertical Enclosures

Model	C-24V1	C-24VD / Y-001	C-24VD / Y-A9 (50/60A)	C-30V2	C-48V5
Outlets	(24) 5-20R	(24) C13	(12) C13 + (12) C19	(24) C13 + (6) C19	(48) C13
Input Voltage (V)	100-120V	3-Phase 208-240V	3-Phase 208-240V	208-240V	3-Phase 240/415V
Amps (A)	20A or 30A	20A or 30A	50A or 60A	20A or 30A	20A or 30A
Cabinet kW	2.4kW or 3.6kW	7.2kW or 10.8kW	18kW or 21.6kW	4.2kW or 6.2kW	14.4kW or 21.6kW
Output Voltage (V)	100-120V	208-240V	208-240V	208-240V	240V
Dimensions	31U 54" 1372mm	29U 50" 1270mm	38U 65" 1651mm	31U 54" 1372mm	43U 74" 1880mm



Metered CDU

Horizontal Rack Mounted Enclosures

Model	C-4HD	C-10H1	C-12H2
Outlets	(4) C19	(10) 5-20R	(12) C13
Input Voltage (V)	208-240V	100-120V	208-240V
Amps (A)	20A or 30A	20A or 30A	20A or 30A
Cabinet kW	4.2kW or 6.2kW	2.4kW or 3.6kW	4.2kW or 6.2kW
Output Voltage (V)	208-240V	100-120V	208-240V
Dimensions	2U 7" (180mm) Depth	1U 5" (127mm) Depth	1U 5" (127mm) Depth



Model	C-24H2	C-4H2
Outlets	(24) C13	(4) C19
Input Voltage (V)	208-240V	208-240V
Amps (A)	30A	20A or 30A
Cabinet kW	6.2kW	4.2kW or 6.2kW
Output Voltage (V)	208-240V	208-240V
Dimensions	1U 5" (127mm) Depth	1U 7" (178mm) Depth



Smart CDU

Zero-U Vertical Enclosures

Model	CS-16V1-MX	CS-16V2-MX	CS-16V1	CS-16V2	CS-18V-A3	CS-18V5	CS-18VD8-A3
Outlets	(16) 5-20R	(16) C13	(16) 5-20R	(16) C13	(18) C19	(18) C19	(18) C19
Input Voltage (V)	100-120V	208-240V	100-120V	208-240V	3-Phase 208-240V	3-Phase 240/415V	3-Phase 240V
Amps (A)	20A	20A	20A or 30A	20A or 30A	50A or 60A	20A or 30A	100A
Cabinet kW	2.4kW	4.2kW	2.4 or 3.6kW	4.2kW or 6.2kW	18kW or 21.6kW	14.4kW or 21.6kW	36.0kW
Output Voltage (V)	100-120V	208-240V	100-120V	208-240V	208-240V	240V	240V
Dimensions	23U 39.5" 1003mm	23U 39.5" 1003mm	26U 44.5" 1130mm	29U 49.5" 1257mm	40U 69" 1753mm	40U 69" 1753mm	48U 84" 2134mm



Smart CDU

Zero-U Vertical Enclosures

CS-24V1	CS-24V2	CS-24V2-8C1	CS-24VD / VY	CS-24V2-MA	CS-24VD / VY-MA	CS-24VD / VY 12x12
(24) 5-20R	(24) C13	(18) C13 + (6) C19	(24) C13	(18) C13 + (6) C19	(18) C13 + (6) C19	(12) C19 + (12) C13
100-120V	208-240V	208-240V	3-Phase 208-240V	208-240V	3-Phase 208-240V	3-Phase 208-240V
20A or 30A	20A or 30A	20A or 30A	30A	20A or 30A	30A	50A or 60A
2.4kW or 3.6kW	4.2kW or 6.2kW	4.2kW or 6.2kW	10.8kW	4.2kW to 6.2kW	10.8kW	18kW or 21.6kW
100-120V	208-240V	208-240V	208-240V	208-240V	208-240V	208-240V
40U 69" 1753mm	40U 69" 1753mm	37U 63.8" 1620mm	40U 69" 1753mm	40U 69" 1753mm	40U 69" 1753mm	40U 69" 1753mm



Smart CDU

Zero-U Vertical Enclosures

Model	CS-24V5-A9	CS-24V5-A3	CS-27VY	CS-27VY-423	CS-30V2	CS-3AVY	CS-36V2
Outlets	(12) C13 + (12) C19	(24) C19	(6) 5-20R + (21) C13	(21) 5-20R + (6) L6-20R	(24) C13 + (6) C19	(12) 5-20R + (9) C13 + (9) C19	(30) C13 + (6) C19
Input Voltage (V)	3-Phase 240/415V	3-Phase 240/415V	3-Phase 208-240V	3-Phase 208V	208-240V	3-Phase 208-240V	208-240V
Amps (A)	20A or 30A	60A	30A	20A or 30A	20A or 30A	20A or 30A	60A
Cabinet kW	14.4kW or 21.6kW	43.2kW	10.8kW	7.2kW or 10.8kW	4.2kW or 6.2kW	7.2kW or 10.8kW	12.4kW
Output Voltage (V)	240V	240V	100-120V + 208-240V	208-240V	208-240V	100-120V + 208-240V	208-240V
Dimensions	40U 69" 1753mm	43U 75" 1905mm	40U 69" 1753mm	40U 69" 1753mm	35U 60" 1525mm	40U 68" 1727mm	42U 73" 1854mm



Smart CDU

Zero-U Vertical Enclosures



CS-36VD / VY	CS-36VD / Y-A4	CS-36VD / Y-A4	CS-36V5-A4C	CS-42VD / Y	CS-42VD / Y	CS-48VDD / VD-A1
(36) C13	(24) C13 + (12) C19	(24) C13 + (12) C19	(24) C13 + (12) C19	(42) C13	(42) C13	(36) C13 + (12) C19
3-Phase 208-240V	3-Phase 208-240V	3-Phase 208-240V	3-Phase 240/415V	3-Phase 208V-240V	3-Phase 208V-240V	3-Phase 208-240V
30A	20A or 30A	20A or 30A	20A or 30A	20A or 30A	20A or 30A	50A or 60A
10.8kW	7.2kW or 10.8kW	7.2kW or 10.8kW	14.4kW or 21.6kW	7.2kW or 10.8kW	7.2kW or 10.8kW	18kW or 21.6kW
208-240V	208-240V	208-240V	240V	208-240V	208-240V	208-240V
40U 68" 1727mm	42U 73.5" 1867mm	42U 73.5" 1867mm	42U 73.5" 1867mm	44U 76" 1930mm	44U 76" 1930mm	40U 69" 1753mm



Smart CDU

Smart Modular 3-Phase CDU



Model	Sample Installation	CS-3VD / VY	CL-3VD / VY
Outlets	Smart Modular 3-Phase Master	Master	Expansion
Input Voltage (V)	(CS-3VD / VY) CDU with	3-Phase 208-240V	3-Phase 208-240V
Amps (A)	(3) Basic Satellite CDUs	30A or 60A	30A or 60A
Cabinet kW	(CB-8V2-A) connected	10.8kW or 21.6kW	10.8kW or 21.6kW
Output Voltage (V)	—	208-240V	208-240V
Dimensions	—	8U 13.7" 347mm	8U 13.7" 347mm



Model	CB-4V2	CB-8V2-A	CB-8V2-B	CB-10V2
Outlets	(4) C19	(6) C13 + (2) C19	(4) C13 + (4) C19	(10) C13
Input Voltage (V)	208-240V	208-240V	208-240V	208-240V
Amps (A)	Up to 32A	Up to 32A	Up to 32A	Up to 32A
Cabinet kW	Up to 7.3kW	Up to 7.3kW	Up to 7.3kW	Up to 7.3kW
Output Voltage (V)	208-240V	208-240V	208-240V	208-240V
Dimensions	8U 13.7" 347mm	8U 13.7" 347mm	8U 13.7" 347mm	8U 13.7" 347mm



Smart CDU

Smart Power Monitor



Model	CS-2HD1 Smart Power Monitor	CS-2HD2 20A Smart Power Monitor	CS-2HD2 30A Smart Power Monitor
Outlets	C19	C19	L6-30R
Input Voltage (V)	100-120V	208-240V	208-240V
Amps (A)	20A	20A	30A
Cabinet kW	4.8kW	8.4kW	12.4kW
Output Voltage (V)	100-120V	208-240V	208-240V
Dimensions	1U 7" (178mm) Depth	1U 7" (178mm) Depth	1U 7" (178mm) Depth



Model	CS-2HDD / Y Smart Power Monitor	CS-2H5 415V Smart Power Monitor	CS-2HDD 50A / 60A Smart Power Monitor
Outlets	L15 or L21	L22-30P or IEC 60309 Wye	CS8364C or IEC 60309 Delta
Input Voltage (V)	3-Phase 208-240V	3-Phase 415V	3-Phase 208-240V
Amps (A)	20A or 30A	20A or 30A	50A or 60A
Cabinet kW	14.4kW or 21.6kW	14.4kW or 21.6kW	36kW or 43.2kW
Output Voltage (V)	3-Phase 208-240V	3-Phase 415V	3-Phase 208-240V
Dimensions	1U 7" (178mm) Depth	1U 7" (178mm) Depth	1U 7" (178mm) Depth



Smart CDU

Horizontal Rack Mounted Enclosures



Model	CS-4HD / HY	CS-6HD / HY	CS-6H5
Outlets	(4) NEMA L15-30R	(6) NEMA L6-30R	(6) NEMA L6-30R
Input Voltage (V)	3-Phase 208-240V	3-Phase 208-240V	3-Phase 240/415V
Amps (A)	50A or 60A	50A or 60A	20A or 30A
Cabinet kW	18kW or 21.6kW	18kW or 21.6kW	14.4kW or 21.6kW
Output Voltage (V)	208-240V	208-240V	240V
Dimensions	2U 10" (254mm) Depth	2U 10" (254mm) Depth	2U 10" (254mm) Depth



Model	CS-12HD2	CS-12HDD / Y
Outlets	(12) C19	(12) C19
Input Voltage (V)	208-240V	3-Phase 208-240V
Amps (A)	20A or 30A	20A or 30A
Cabinet kW	4.2kW or 6.2kW	7.2kW or 10.8kW
Output Voltage (V)	208-240V	208-240V
Dimensions	2U 10" (254mm) Depth	2U 10" (254mm) Depth



Smart CDU

Horizontal Rack Mounted Enclosures



CS-12HD / Y-C8
(6) C13 + (6) C19
3-Phase 208-240V
20A or 30A
7.2kW or 10.8kW
208-240V
2U | 10" (254mm) Depth



CS-12HD-A3
(12) C19
3-Phase 208-240V
50A or 60A
18kW or 21.6kW
208-240V
2U | 10" (254mm) Depth



CS-15HD / Y
(12) C19 + (3) C13
3-Phase 208-240V
50A or 60A
18kW or 21.6kW
208-240V
2U | 14" (356mm) Depth



CS-24H5
(18) C13 + (6) C19
3-Phase 240/415V
20A or 30A
14.4kW or 21.6kW
240V
3U | 10" (254mm) Depth



Switched CDU

Zero-U Vertical Enclosures



Model	CW-16V1	CW-16V2 PIPS	CW-24V2	CW-24V2-A1	CW-24V2 PIPS	CW-24V2-C1
Outlets	(16) 5-20R	(16) C13	(24) C13	(18) C13 + (6) C19	(24) C13	(18) C13 + (6) C19
Input Voltage (V)	100-120V	208-240V	208-240V	208-240V	208-240V	208-240V
Amps (A)	20A or 30A	20A or 30A	20A or 30A	20A or 30A	20A or 30A	20A or 30A
Cabinet kW	2.4kW or 3.6kW	4.2kW or 6.2kW	4.2kW or 6.2kW	4.2kW or 6.2kW	4.2kW or 6.2kW	4.2kW or 6.2kW
Output Voltage (V)	100-120V	208-240V	208-240V	208-240V	208-240V	208-240V
Dimensions	26U 44.5" 1130mm	29U 49.5" 1257mm	40U 69" 1753mm	40U 69" 1753mm	37U 64" 1625mm	40U 69" 1753mm

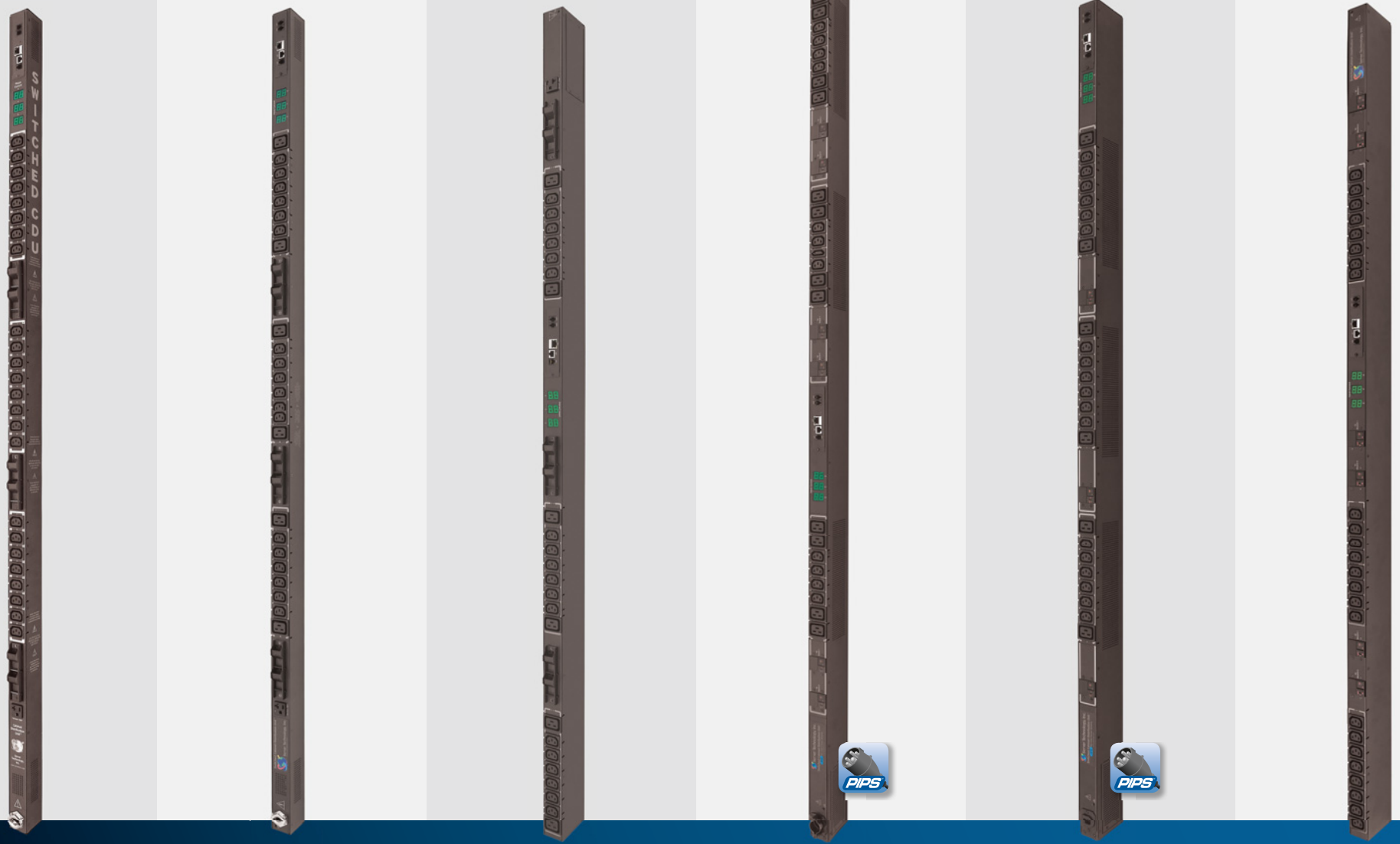


Switched CDU

Zero-U Vertical Enclosures



CW-24VD / VY	CW-24VD / VY-A1	CW-24VYM	CW-24VD / VY-A9	CW-24Vxxx415A1	CW-24VD / VY
(24) C13	(18) C13 + (6) C19	(18) C13 + (6) C19	(12) C13 + (12) C19	(18) C13 + (6) C19	(24) C13
3-Phase 208-240V	3-Phase 208-240V	3-Phase 208-240V	3-Phase 208-240V	3-Phase 208-240V	3-Phase 208-240V
20A or 30A	20A or 30A	30A	50A or 60A	20A or 30A	50A or 60A
7.2kW or 10.8kW	7.2kW or 10.8kW	10.8kW	18kW or 21.6kW	7.2kW or 10.8kW	18kW or 21.6kW
208-240V	208-240V	208-240V	208-240V	208-240V	208-240V
40U 69" 1753mm	40U 69" 1753mm	40U 68" 1727mm	44U 75.8" 1778mm	40U 69" 1753mm	40U 70" 1778mm

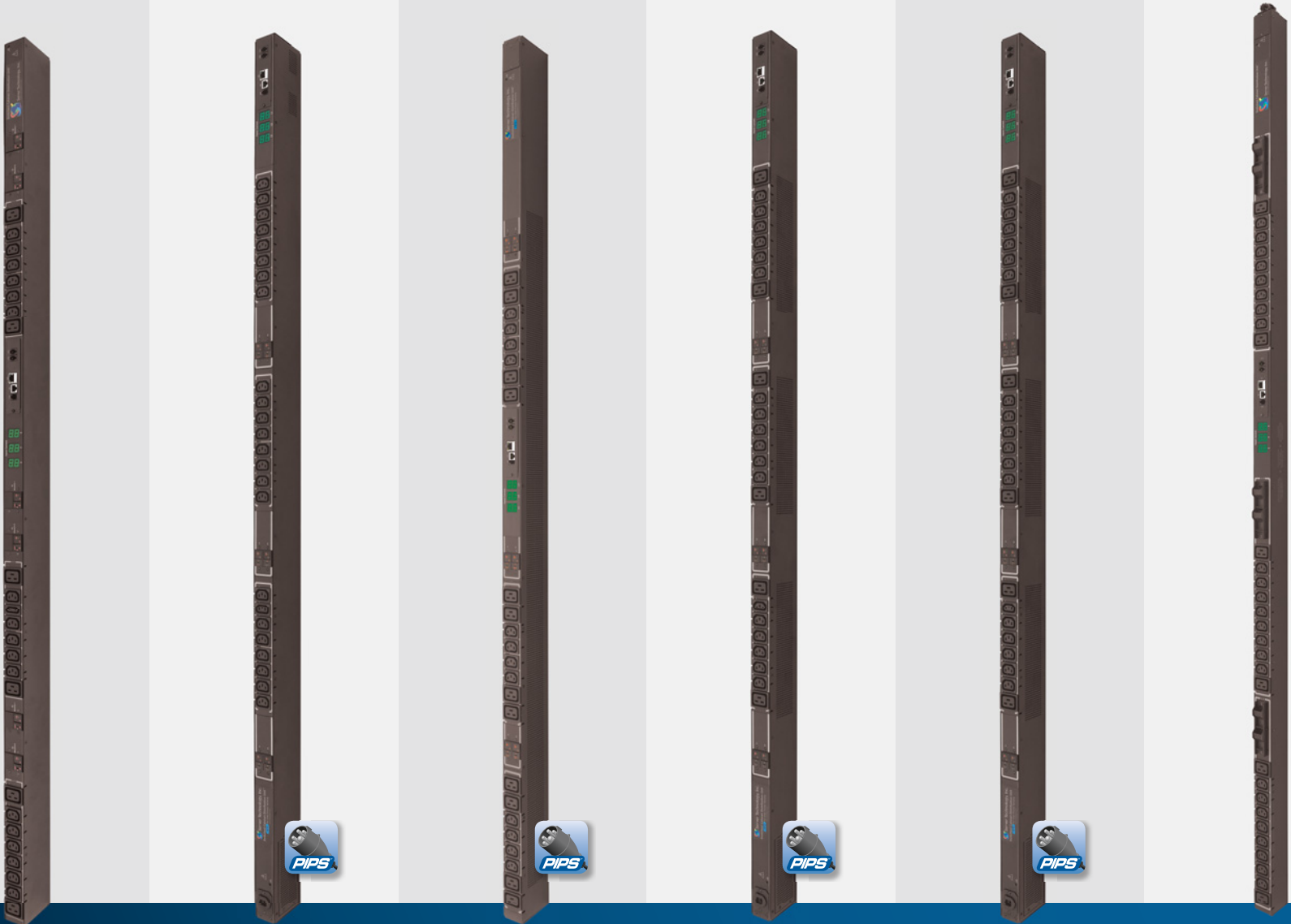


Switched CDU

Zero-U Vertical Enclosures



Model	CW-24VD / Y	CW-24V5	CW-24V5-A9 (top entry)	CW-24V5-A1	CW-24V5-A9 (front entry)	CW-30VD / Y-C2
Outlets	(18) C13 + (6) C19	(24) C13	(12) C13 + (12) C19	(18) C13 + (6) C19	(12) C13 + (12) C19	(24) C13 + (6) C19
Input Voltage (V)	3-Phase 208-240V	3-Phase 240/415V	3-Phase 240/415V	3-Phase 240/415V	3-Phase 240/415V	3-Phase 208-240V
Amps (A)	50A or 60A	20A or 30A	20A or 30A	20A or 30A	20A or 30A	20A or 30A
Cabinet kW	18kW or 21.6kW	14.4kW or 21.6kW	14.4kW or 21.6kW	14.4kW or 21.6kW	14.4kW or 21.6kW	7.2kW or 10.8kW
Output Voltage (V)	208-240V	240V	240V	240V	240V	208-240V
Dimensions	40U 70" 1778mm	40U 69" 1753mm	40U 69" 1753mm	40U 69" 1753mm	40U 69" 1753mm	44U 76" 1930mm



Switched CDU

Zero-U Vertical Enclosures



CW-30VD / Y	CW-30V5-C2	CW-32V-A1	CW-48VD-A1 Fuses	CW-48VD / VY (50/60A)	CW-48VD / VY-A1 (50/60A)	CW-48V5
(24) C13 + (6) C19	(24) C13 + (6) C19	(24) C13 + (6) C19	(36) C13 + (12) C19	(48) C13	(36) C13 + (12) C19	(36) C13 + (12) C19
3-Phase 208-240V	3-Phase 240/415V	208-240V	3-Phase 208-240V	3-Phase 208-240V	3-Phase 208-240V	3-Phase 240/415V
20A or 30A	20A or 30A	20A or 30A	20A or 30A	50A or 60A	50A or 60A	20A or 30A
7.2kW or 10.8kW	14.4kW or 21.6kW	4.2kW or 6.2kW	7.2kW or 10.8kW	18kW or 21.6kW	18kW or 21.6kW	14.4kW or 21.6kW
208-240V	240V	208-240V	208-240V	208-240V	208-240V	240V
40U 69" 1753mm	40U 69" 1753mm	24U 42" 1067mm	40U 69" 1753mm	40U 69" 1753mm	40U 69" 1753mm	40U 69" 1753mm



Switched CDU

Horizontal Rack Mounted Enclosures



Model	CW-8H1	CW-8H2
Outlets	(8) 5-20R	(8) C13
Input Voltage (V)	100-120V	208-240V
Amps (A)	20A or 30A	20A or 30A
Cabinet kW	2.4kW or 3.6kW	4.2kW or 6.2kW
Output Voltage (V)	100-120V	208-240V
Dimensions	1U 7" (178mm) Depth	1U 7" (178mm) Depth



Model	CW-16H1	CW-16HD1 Dual Input
Outlets	(16) 5-20R	(16) 5-20R
Input Voltage (V)	100-120V	100-120V
Amps (A)	20A or 30A	20A or 30A
Cabinet kW	2.4kW or 3.6kW	4.8kW or 7.2kW
Output Voltage (V)	100-120V	100-120V
Dimensions	2U 7" (178mm) Depth	2U 10" (254mm) Depth



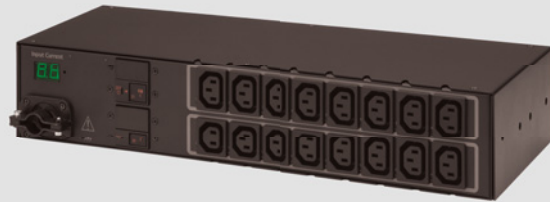
*Not Linkable

Switched CDU

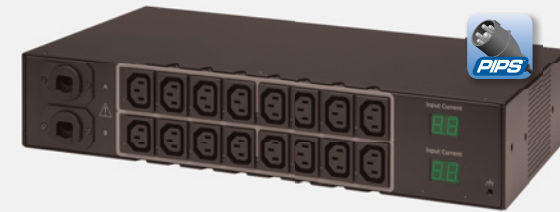
Horizontal Rack Mounted Enclosures



CW-16H2
 (16) C13
 208-240V
 20A or 30A
 4.2kW or 6.2kW
 208-240V
 2U | 7" (178mm) Depth



CW-16HD2 Dual Input
 (16) C13
 208-240V
 20A or 30A
 8.4kW or 12.4kW
 208-240V
 2U | 10" (254mm) Depth



CW-2H1*
 (2) 5-20R
 100-120V
 20A
 2.4kW
 100-120V
 1U | 5.5" (140mm) Depth



CW-2H2*
 (2) C13
 208-240V
 20A
 4.2kW
 208-240V
 1U | 5.5" (140mm) Depth

