



EcoStruxure IT Advisor

HPE OneView integration for converged data center management

Holistic management with integrated IT/facility solutions resulting in greater agility, efficiency and cost savings

Schneider Electric's EcoStruxure for Data Center & Hewlett Packard Enterprise OneView service automation platform

ecostruxureit.com


Hewlett Packard
Enterprise

Life Is On

Schneider
Electric

Converged IT & Infrastructure Management

Learn about the Management Programs:

Schneider Electric Data Center Infrastructure Management (DCIM):

StruxureWare Data Center Expert:

A scalable monitoring system which collects, organizes and distributes critical alerts, provides site surveillance, security and designated information in real time, providing a unified view of complex physical infrastructure environments from anywhere on the network.

EcoStruxure IT Advisor on-premise:

Optimizes management of the data center physical infrastructure through an operations framework. The application ties real-time physical infrastructure management of space, power and cooling capacities and its potential impact, to physical servers hosting virtual machines via a connector to Hewlett Packard Enterprise OneView management software.

Hewlett Packard Enterprise OneView:

HPE OneView uses a template-based approach to management that lets users deploy infrastructure faster and simplify lifecycle operations across compute, storage, and fabric, transforming these resources into software-defined infrastructure.

The unified API in HPE OneView accelerates application and service delivery instantly, increasing productivity and control across the data center using a single line of code to compose infrastructure fast. This enables IT to help maximize the speed, agility, and efficiency of delivering applications and services to meet their business service-level agreements (SLAs).

Holistic Visibility & Control

The connector enables unidirectional communication between EcoStruxure IT Advisor and HPE OneView:

Seamless integration eliminates time-consuming, repetitive data entry and minimizes error.

With visibility into server, storage and network management as well as service creation, this integration provides holistic visibility and control of IT service delivery and infrastructure capacity management.

Key Benefits



Capacity

- Manage constraints within IT services and facilities.
- Rapid identification of available physical resources (space, power, cooling, network, IP, etc.) for service provisioning.



Intelligence

- Maintains changes and enforces policies across IT and infrastructure.
- Automatically maintains compliance with internal and external regulatory requirements.

Boston ONE Campus
800 Federal Street
Andover, MA 01810
www.schneider-electric.com/dcim

Life Is On

Schneider
Electric

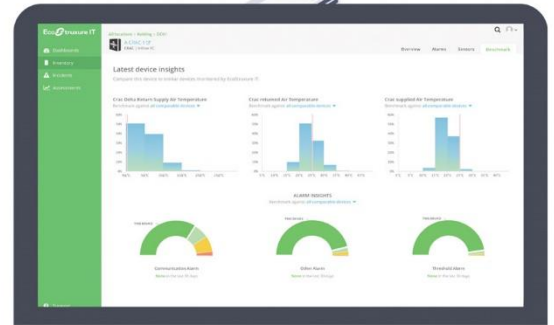
End-to-End Portfolio

Schneider Electric & Hewlett Packard Enterprise

Holistic Management & integrated IT/facility solution:

EcoStruxure for Data Center suite, combined with Hewlett Packard Enterprise OneView management platform provides a holistic management and integrated IT/facility solution resulting in greater agility, efficiency and cost savings for your business

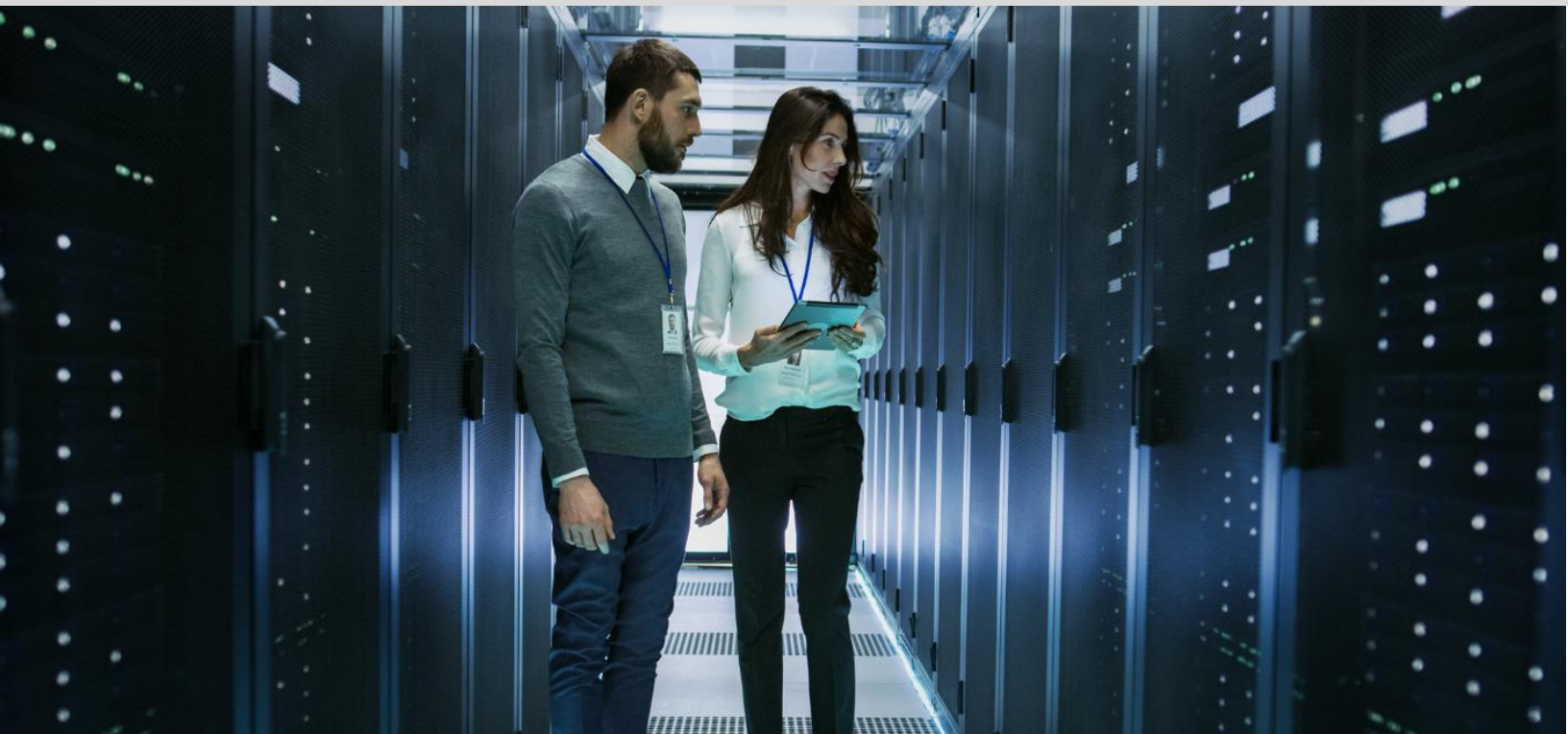
With the integration into HPE OneView, EcoStruxure for Data Center continues to build on its goal of converged IT and facilities management solutions. This connector enables communication between ITSM and DCIM platforms, providing simultaneous visibility to both IT and facilities managers, enabling a key next step in automated service deliveries and Data Center Service Optimization (DCSO).



Partnership Benefits:

End-to-end portfolio of services and facility, IT and service management expertise to deliver complex, multi- vendor data center projects.

Combined power of Schneider Electric's world-leading DCIM solution with Hewlett Packard Enterprise complete IT Operations and Management Software portfolio.



Life Is On

