



APC

Smart-UPS Ultra

Smaller, lighter and more power protection with 3x the battery life

The most trusted UPS brand brings you the smallest, lightest
5kW Lithium-ion UPS

apc.com/smart-ups-ultra

Life Is On

Schneider
Electric

The world's most popular network and server UPS, now smaller and lighter



APC Smart-UPS™ Ultra is the smallest and lightest Lithium-ion 5kW UPS

The world's most popular UPS is now available with improved battery life and a compact design. APC's Smart-UPS Ultra offers trusted, premium power protection to ensure network and data availability. Designed for local edge environments and micro data centers, the Smart-UPS Ultra provides consistent and reliable connectivity at the most critical moments. The UPS's light and compact size along with auto-rotating display allow for effortless installation. Increased UPS battery life and lower maintenance service costs provide a lower total cost of ownership over 10 years.

That's Certainty in a Connected World.

Smart-UPS Ultra features

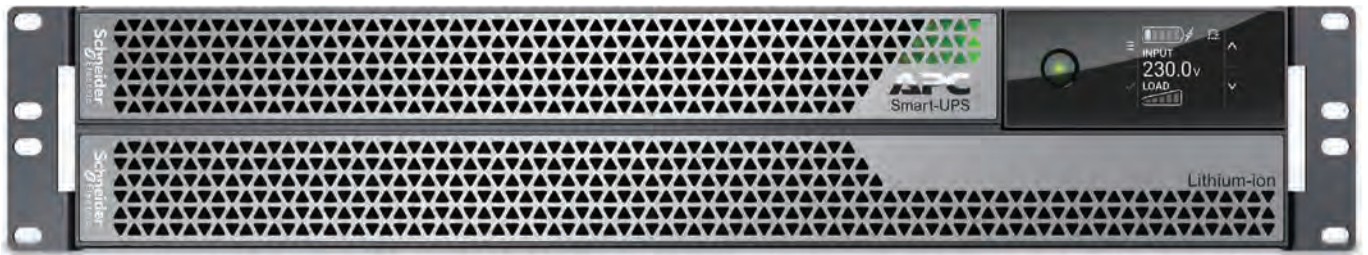
The smallest and lightest 5kW Lithium-ion UPS

30% smaller, 50% lighter, 1.5x more power

Next-gen semiconductor technology gives this UPS 1.5x more power in a 2U footprint.

High resolution LCD

Auto-rotating display with virtual touch keys



LED status indicator

At-a-glance indication of UPS Status

3x the battery life

The Lithium-ion battery lasts 8-10 years (3x VRLA) and won't need to be replaced under normal operating conditions, reducing Total Cost of Ownership

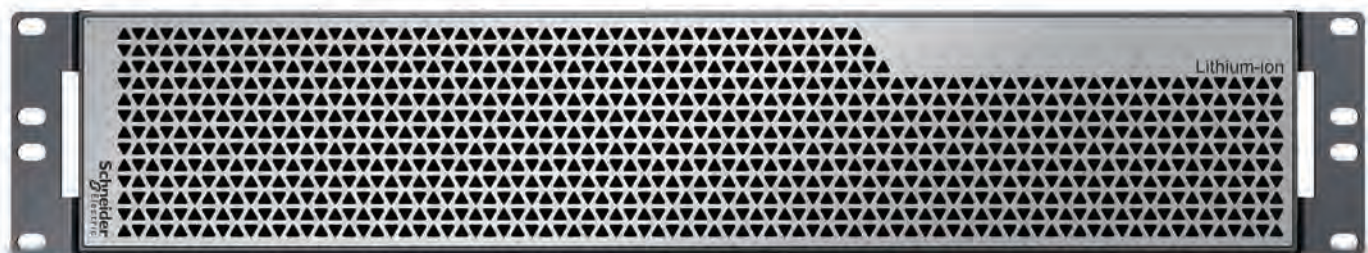


EcoStruxure Ready

Connect to EcoStruxure™ IT via the embedded network port

Extended Runtime options

Up to 10 external battery packs



EcoStruxure Ready Smart-UPS

Secure monitoring and UPS fleet management.

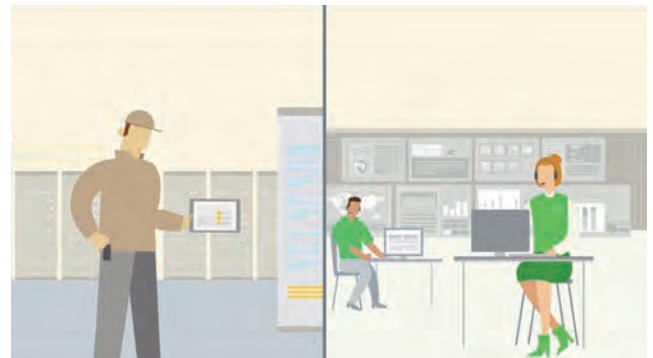


EcoStruxure IT Expert

The do-it-yourself advanced monitoring

We empower you to monitor and service customers on your own or provide EcoStruxure IT Expert to your customers who prefer a self-managed option.

Ideal for distributed IT sites and businesses with mixed IT environments.



EcoStruxure IT Asset Advisor

We advise, you maintain

We provide monitoring services, and you handle the maintenance. This option appeals most to partners who want to use their own on-site service.



EcoStruxure IT Monitoring and Dispatch

We monitor and service

We provide monitoring and maintenance services on your behalf. Ideal for IT solution providers who want to add service without additional cost to your business model.

Smart-UPS management solutions



PowerChute Network Shutdown

Provides graceful network-based shutdown of physical and virtual IT architectures

Network-based, graceful, unattended shutdown and restart of your physical servers and virtual machines during prolonged power disturbances.

Smart-UPS accessories

UPS management accessories*

- AP9834: APC USB Wi-Fi Device
- AP9810: dry contact I/O accessory
- AP9335T & AP9335TH: sensor



AP9834

Battery packs:

- SRTL180RMBP2U: APC Smart-UPS Ultra On-Line Lithium ion XBP 180V 2U Rack/Tower



SRTL180RMBP2U

Smart-UPS accessories continued

Rail kits:

- SRTRK2: APC Smart-UPS SRT 19 inch rail kit for Smart-UPS SRTL 5kW

Backplate kit/ Replaceable PDU's:

- SRTL002: APC Smart-UPS Ultra On-Line 5kVA OUTPUT Hardwire KIT
- SRTL003: APC Smart-UPS Ultra On-Line 5kVA OUTPUT IEC KIT

Service bypass panels:

- SBP5000RMI2U: APC SERVICE BYPASS PANEL - 230V; 32A; BBM; IEC320 C20/HW INPUT; IEC-320 OUTPUT - (2) C19 (8) C13

Output step down transformers

- SRTL5KTF: APC Smart-UPS Ultra On-Line SRTL 5kVA tower isolation/step down transformer
- SRTL5KRMTF: APC Smart-UPS Ultra On-Line SRTL 5kVA RM step down transformer

Replacement battery cartridge

- SRYLBM: APC Smart-UPS Modular Ultra On-Line Lithium-ion Battery Module

Others

- SRTL006: APC Smart-UPS Ultra On-Line 15ft Extension Cable for SRTL 5K 180V XBP

Smart-UPS Ultra

SKU technical specifications



| | SRTL5KRM2UI |
|---|--|
| Topology | On-Line |
| Output | |
| Output power capacity | 5000VA/5000W |
| Nominal output voltage | 220V, 230V, 240V |
| Output voltage distortion | (Full R Load) 1% |
| Output frequency | 50/60Hz ± 3Hz (auto sense), 50/60Hz ± 0.1Hz user selectable 50/60Hz ± 3 Hz user selectable |
| Waveform type | Sine Wave |
| Output connections | (6) IEC 320 C13 (VDE approved) - Thermal CB 10A, (4) IEC 320 C19 (VDE approved) - Thermal CB 15A |
| Efficiency green mode | 98.5% |
| Input | |
| Nominal input voltage | 220V, 230V, 240V |
| Input frequency | 40 - 70Hz |
| Input connections | Hardwired |
| Input voltage range for full load operation | 187 ~ 275 V (±5V) |
| Batteries and runtime | |
| Battery type | Lithium-ion |
| Runtime (5000W/2500W) | 5 min / 12 min |
| External battery | SRTL180RMBP2U (connect up to 10 external battery packs) |
| Communications and management | |
| Interface port(s) | USB-A, Ethernet, Universal I/O, EPO |
| Network management | Network Management Card Embedded |
| Control panel | Auto-rotating, multicolor high resolution LCD with virtual touch keys |
| Physical | |
| Net HxWxD | 86mm (3.4in) x 432mm (17in) x 795mm (31.3 in) (after cable gland) |
| Net weight | 60lbs (27.2kg) |
| Environmental | |
| Operating environment | 0 – 40 °C (32 – 104 °F) |
| Operating elevation | 0-3000 meters (0-10000 feet) |
| Storage temperature | -15 – 45 °C (5 – 113 °F) short term storage |
| Storage relative humidity | 0 – 95%, non-condensing |
| Storage elevation | 0-15000 meters (0-50000 feet) |
| Conformance | |
| Regulatory approvals | UPS: EN/IEC 62040-1, VDE, CE, UKCA, IEC 62040-2 / EN IEC 62040-2 Battery Pack and RBC: EN/IEC 62040-1, IEC 62619, UN 38.3, CE, UKCA Electronic circuits and software controls in the battery pack are evaluated as per IEC 60730-1 |
| Standard warranty | 5-Year UPS and batteries |

Life Is On

Schneider
Electric

Learn more today!

apc.com/smart-ups-ultra

Schneider Electric

Schneider Electric
35 rue Joseph Monier
92500 Rueil-Malmaison, France
Phone: + 33 (0)1 41 29 70 00

March 2022

©2022 Schneider Electric. All Rights Reserved.
Schneider Electric | Life Is On is a trademark and the property of Schneider Electric SE, its subsidiaries, and affiliated companies.
• 998-21912450_GMA-US



This document has been
printed on recycled paper

